



# Issue#1

## Important Dates

---

### ASH WEDNESDAY

Wednesday 14 February  
2024

Community Group  
Meeting 9.15a.m. &  
6.15p.m.

Wednesday 21 February  
2024

Community Group  
Meeting 9.15a.m. &  
6.15p.m.

Wednesday 20 March 2024

GOOD FRIDAY -  
PUBLIC HOLIDAY

Friday 29 March 2024

EASTER SUNDAY

Saturday 30 March 2024

EASTER MONDAY -  
PUBLIC HOLIDAY

Monday 1 April 2024

LAST DAY OF  
TERM 1

Friday 12 April 2024

FIRST DAY OF  
TERM 2

Monday 29 April 2024

---

## Upcoming Events

---

World Read Aloud  
Day

Assembly  
Date: Thursday 15 February

Carnavale Day  
Date: Friday 16 February

School Board  
Meeting

Date: Wednesday 7 February  
Time: 12:00am - 12:00am  
Venue: St Gabriel's School - Enfield

Time: 2:15pm - 2:45pm  
Venue: St Gabriel's School - Enfield

Time: 12:00am - 12:00am  
Venue: St Gabriel's School - Enfield

Date: Wednesday 21 February  
Time: 7:00pm - 9:00pm  
Venue: St Gabriel's School - Enfield

### Year 6 Aquatic Day

Date: Thursday 22 February  
Time: 8:30am - 3:00pm  
Venue: Seacliff Life Saving Club - Seacliff

### Year 5 Aquatics Day

Date: Friday 23 February  
Time: 8:30am - 3:00pm  
Venue: Seacliff Life Saving Club - Seacliff

### Year 4 Zoo Snooze

Date: Wednesday 6 March - Thursday 7 March  
Time: 9:00am  
Venue: Adelaide Zoo - Adelaide

### Year 4 Zoo Snooze

Date: Thursday 7 March - Friday 8 March  
Time: 9:00am  
Venue: Adelaide Zoo - Adelaide

### World Book Day Buddy Reading

Date: Thursday 7 March - Monday 30 November  
Time: 9:00am  
Venue: St Gabriel's School - Enfield

### School Board Meeting

Date: Wednesday 20 March  
Time: 7:00pm - 9:00pm  
Venue: St Gabriel's School - Enfield

### Assembly - Year 1

Date: Thursday 21 March - Monday 30 November  
Time: 2:15pm  
Venue: St Gabriel's School - Enfield

### Harmony Day

Date: Thursday 21 March - Monday 30 November  
Time: 9:00am  
Venue: St Gabriel's School - Enfield

### International Children's Book Day

Date: Tuesday 2 April - Monday 30 November  
Time: 9:00am  
Venue: St Gabriel's School - Enfield

---

## FROM THE PRINCIPAL

Dear Parents/Caregivers,

Welcome to 2024

It has been wonderful to walk through the school this week and reconnect with students, parents and staff. I hope a relaxing break was had by all, with special moments shared over the Christmas season. I have enjoyed hearing a myriad of holiday stories from the children, telling them with eyes lit up and excitement in their voices.

Thankfully the building is 99% complete. There are a few final details to be ticked off, with most of the project complete. I would like to thank the Board and staff for their invaluable contribution to the project and to all community members for their patience and flexibility during the process. I think we would all agree, the final product was worth it.

We welcome our new students and their families to St Gabriel's School and wish them well as they start their learning journey with us: **RED:** Emilia, Areng, Isabella, Aashi, Francesca, Abigail, Aimy, Gia-Linh, Leandro, Yunay, Axel, Luka, Damian, Abraham, Ranfateh, Kabir, Hudson, Aiden **REWN:** Hannah, Alice, Lily, Ariana, Venisha, Prashavi, Neil, Elijah, Xavier, Havrlmert, Chad, Ethan, Ayaan, Seth, Anthony, Daoud, Timothy, Yash **RE1T:** Indie, Sophia, Paul, **2K:** Sivalekshambika, Saanvie, **2H:** Elyas **3PM:** Amay, Raadaye **3B:** Aarav, Ashley **4F:** Ali-Redhha, Julie **4H:** Yazhini, Naweed **5M:** Willow, Isaac **5CT:** Mohamed **6B:** Abbas.

A reminder that next Wednesday, **February 7**, class teachers will be hosting an **Open House** for parents and carers to come in and say hello. Details sent home today in a flyer.

For those who missed it earlier in the week, I have included a letter from Dr Neil McGoran below. Whilst I am sad to be leaving, I am excited about the opportunity to work with, and support fellow principals in Catholic Education as a School Performance Leader.

Having spent the last few days with Mr Mark Simpson, I am confident the school is in good hands. Please find below the message from Mark to the school community.

Sean Hill

Principal

---

**To the community of St Gabriel's School, Enfield**

*Dear Community Members*

*I write to inform you that Sean Hill has been seconded to the Catholic Education Office for Term 1 as School's Performance Leader.*

*I am pleased to announce that Mark Simpson has been appointed to the position of Acting Principal for this period. Mark will commence on Wednesday 31 January and work with Sean to ensure a smooth leadership transition.*

*Mark was Acting Principal at St Raphael's School, Parkside during Term 3 & 4 2023 and has held a variety of leadership positions through his career including, Education Advisor: Engagement & Wellbeing, Deputy Principal of Rostrevor College, and Principal of an Independent School.*

*Mark has a deep personal faith and will bring demonstrated commitment and enthusiasm for ensuring excellence in teaching and learning to the role.*

*Mark is looking forward to working in partnership with the students, staff, families and the parish community. I would like to express my gratitude to Mark for taking on this leadership position and wish him all the best as he prepares to lead St Gabriel's.*

*Yours sincerely*

*Dr Neil McGoran*

*Executive Director*

---

Message from Mark Simpson

Dear St Gabriel's Community.

I am delighted and honoured to introduce myself to you in my role as Acting Principal of St Gabriel's for Term 1. I am humbled and excited to be joining a school known for its strong community spirit, its caring and dedicated staff, and its commitment to collaborative learning. It is an exciting time to be at St Gabriel's with as a school on a journey of improvement and not just the brand-new buildings.

I have learnt a great deal in my role as Principal over 10 years in several schools including most recently at St Raphael's School, Parkside. I have been fortunate also to work in the Catholic Education Office as this has enabled me to see best practice in many of our 101 schools. Despite the occasional challenges, I love being a School Principal.

I believe strongly in the active partnership between school and home, and I encourage you to engage with St Gabriel's through regular communication, school events, and various volunteer opportunities. Your support is invaluable in creating a strong partnership that contributes to the success of our students. I look forward to meeting you at the beginning and end of each day, at drop-off and in the yard and I will organise a more formal opportunity to meet with you soon.

My role is to maintain the excellent work that has been done by Sean Hill and the team and continue the school's journey of improvement. Thank you for entrusting us with the education and well-being of your children. I am looking forward to a successful and rewarding school term filled with achievements, growth, and memorable moments.

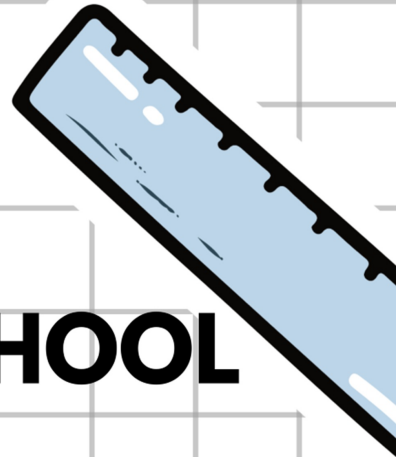
Regards, Mark

Acting Principal





St Gabriel's School  
ENFIELD



# ST GABRIEL'S SCHOOL

## OPEN HOUSE

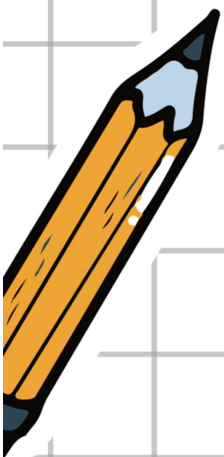
Wednesday 7th February

3.15 - 4.00pm

Then

5.00 pm - 6.15 pm

Come and say hello to your  
child's teacher and collect  
important information about  
the new school year.



## **WELCOME TO A NEW SCHOOL YEAR**

I wish to extend a warm welcome to the many new families who have joined the St Gabriel's School community this year. To the continuing families welcome back and thank you for your support of what we do together for the education of your child.

### **MR HILL**

No doubt there are many people who are saddened by Mr Hill's news that he will not be with us this term. While we may be feeling disappointed, there is a good reason for why Mr Hill needs to take a position in the Catholic Education Office. Let us give thanks for what Mr Hill has achieved at our school and look with hope and expectation to a bright future.

### **OPENING SCHOOL MASS**

The school is preparing for the Opening School Mass. We have been discussing that God is Love and if we know love we know God.

Showing Love of God looks like being a good friend, working to make a positive difference, sharing our talents, and caring for our world. We will begin the school year with prayer and song to ask for God's blessings on us to help us have a good year.

Opening School Mass will be held at school in the Sacred Heart Centre ( Gym) at 11.30 am. Parents are most welcome to join us. There are no access restrictions so entry to the gym is very easy. There will be a parent seating area on the northern side of the gym.

### **SHROVE TUESDAY**

On Tuesday 13th of February, the children will celebrate Shrove Tuesday. Shrove Tuesday is the day before the church's season of Lent, and we symbolically prepare for a time of prayer, fasting and alms giving. The pancake is a reminder of days gone by when rich, luxury foods were eaten and removed from the home to make way for a time of simpler and more conservative living to honour God.

Each child will receive a pancake with jam, honey, or sugar topping. Plain options will also be available as will gluten free options.

Classroom learning will also centre on the meaning of Shrove Tuesday and the season of Lent.

### **ASH WEDNESDAY**

February 14th is the beginning of Lent and begins a time of preparing for the Death and Resurrection of Jesus. To prepare for the resurrection we spend time reflecting on our lives and think about what we can change in our life to be in a closer relationship with God. To remind ourselves of our own humanity and willingness to obey God, we place ashes on the forehead of each person at the liturgy with the words, 'Turn Back to God'. We can read a similar act of repentance in the Book of Jonah in the Hebrew Scriptures.

Jonah 4:6 When the news reached the king of Nineveh, he rose from his throne, removed his robe, covered himself with sackcloth, and sat in ashes.

The Ninevites in the Book of Jonah demonstrated a desire to obey God and humbled themselves by wearing plain clothes and covering themselves with ash. We can also show a commitment to God in the Lenten season.

Anyone can receive the ashes and rest assured we are aware of individual beliefs and wishes of children when receiving or not receiving ashes.

The ashes are a sign of us humbling ourselves before God and asking God to forgive us for our transgressions. It is a symbol of healing and a desire to turn back to God.

### **CLASS MASSES**

When your child's class celebrates Mass there will be a notification via Seesaw. The class will walk up the hill to the Clearview church, The Church of the Good Shepherd. This church is a 10-minute walk from the school. Parents are always welcome to attend.

## **FINANCE**

### **SCHOOL FEES 2024**

School fee statements will be sent home by the end of week 2 and will show the 2024 fees and sibling discounts. Please be assured of the school's support for your family during these difficult times. If you are having difficulty paying fees, please contact Alison to make a time to discuss assistance and payment options available.

### **School Card for 2024**

School Card needs to be re-applied for on an annual basis. 2024 School Card application forms are now available online and from the

Front Office, please apply as soon as possible.

For eligible families, St Gabriel's School lower income fee will apply once School Card is approved:

1st child Lower fee of \$1,380

2nd child Lower fee of \$1,040

and nil fees for further children.

A credit is applied to your account to reflect the lower fee and a revised statement sent home for you.

School Card Income Limits – please note income limits have increased significantly since last year.

The tables below list the income limits for applications lodged in 2024 – based on the family's gross income in 2022/2023.

To qualify for School Card, your family's gross income must be below a certain limit. This limit depends on how many dependent children you have.

You will need to provide proof of income – such as payslips or Centrelink information.

Eligibility income limits for school card:

<b>No of dependent chn</b>	<b>Combined gross family income for 22/2023 financial year</b>	<b>Gross weekly schoolcard income limit</b>
1 child	\$70,994	\$1,365
2 children	\$72,262	\$1,390
3 children	\$73,530	\$1,414
4 children	\$74,798	\$1,439
5 children	\$76,066	\$1,463
Each addit dependent child	\$1,268	\$25

The School Card Scheme is administered by the State Government to provide financial assistance towards the cost of education for full time students of lower income families. Any parent/caregiver who would like more information about the scheme can contact Alison at the school or the School Card section on 1800 672 758 (free call) to discuss or visit the link below:

<http://www.sa.gov.au>

#### **Fee Remission for 2024**

Parents/caregivers experiencing financial difficulties are encouraged to apply for fee remission ASAP. Please email [accounts@sgs.catholic.edu.au](mailto:accounts@sgs.catholic.edu.au) for a fee remission form or collect from the School Office if you wish to apply.

We assure parents/caregivers that all details provided will be kept strictly confidential.

If you are having difficulty with meeting your fee obligations or have any queries, please do not hesitate to contact Alison Boyce (Bursar) or Sean Hill (Principal) on 8216 9900.

Thank you

Alison Boyce

[accounts@sgs.catholic.edu.au](mailto:accounts@sgs.catholic.edu.au)

Direct Ph: 8216 9902

## **WHAT'S HAPPENING IN OUR COMMUNITY**

### **GENERAL INFORMATION**

## Illness

As we are aware, there are many viruses including Covid in our communities at this present time. If you or your child are suffering from any respiratory symptoms, coughing, sneezing etc. we ask that you please do not come to school until you are well. Thank you for your support in this matter.

## Student Attendance

You are reminded to ring the school/leave a message or Seesaw the teacher on the day your child is not attending school - please include the reason for non-attendance.

We'd be grateful if this could be done prior to 9am. Thank you for your support in this matter.

## Keeping Safe

Please be aware that on our school website, there are key documents in relation to keeping all children in our school community safe from harm; physically, mentally and emotionally.

- **Catholic Archdiocese of Adelaide Safeguarding Children and Young People Policy**
- **Cybersafety: Keeping Children Safe in the Connected World**

## Labelling

Please check and ensure that your child's jumper/jacket, hat, drink bottle and small plastic containers are labelled so that they can be returned to them.

## Uniform

**Please note that uniform will be sold at the office on MONDAYS, TUESDAYS AND WEDNESDAY. If using QKR - every day. Other days by appointment.**

TERM 1 - STUDENTS ARE TO BE WEARING THE SUMMER UNIFORM

Please ensure that your child is wearing black laced up shoes with their everyday uniform. Sneakers are not to be worn for everyday uniform and only to be worn with sport uniform

## Clearview Snack Bar - Lunch Menu

Lunches can be ordered by using the Qkr! app - see below or purchasing paper bags and writing your child's name, class and order on the bag with money enclosed. These can be left at the office or given to your child's class teacher.

To view the 2024 uniform price list & policy and the 2024 lunch order menu, click the gallery below:





**ST GABRIEL'S SCHOOL, ENFIELD  
CANTEEN MENU TERM 1 2024**

20 Barnington Avenue  
Enfield SE 26 5EJ  
info@sgs.catholic.edu.au  
(08) 8214 9900



20 Barnington Avenue  
Enfield SE 26 5EJ  
info@sgs.catholic.edu.au  
(08) 8214 9900



SANDWICHES		HOT FOODS	
<i>W fibre, wholemeal and wholegrain</i>		Ham and Cheese Toasted Roll <b>\$6.00</b>	
Vegetarian Sandwich	\$3.00	Hot Roast Chicken Roll with/without Grey	\$6.50
Ham sandwich	\$4.50	Meat Pie (normal size) with sauce	\$4.50
Cheese sandwich	\$3.00	Hot Roast Chicken Roll with sauce	\$4.70
Egg sandwich	\$4.50	Hot Roast Chicken Roll with sauce	\$4.90
Chicken sandwich	\$4.50	Hamburger with Fresh Meat and Cheese	\$6.50
Ham and Cheese sandwich	\$5.00	Hamburger with Fresh Meat, Tomato, Lettuce and Cheese	\$6.80
Chicken and Cheese sandwich	\$6.00	Hot Ham and Cheese Roll	\$5.50
Ham, Lettuce and Tomato sandwich	\$6.50	Ham and Fried Egg Roll	\$5.50
Tom, Lettuce and Tomato sandwich	\$6.50	Pasta with Neapolitan Sauce	\$4.90
<b>TOASTED SANDWICHES</b>		Pasta with Bolognese Sauce	
Cheese	\$3.50	<b>ASIAN/VIETNAMESE FOODS</b>	
Ham and Fried Egg	\$5.00	Fried Rice (Steak, Beef, Ham, Chicken, Pork) One size only	
Ham and Cheese	\$5.00	Fried Rice (Steak, Beef, Ham, Chicken, Pork) One size only	
Chicken and Tomato	\$4.50	Fried Beef (One Size)	
Chicken and Cheese	\$6.00	Spring Roll – Chicken or Vegetarian	
<b>DRINKS</b>		Cold Drink – Chicken or Beef (Hot)	
Orange or Apple/Blackcurrant juice	\$2.00	With Lettuce, Carrot, Mint, Rice Noodles 2 per pack	
Hot Chocolate 250ml	\$2.00	Fried Dumplings – 2 per pack with soy sauce	
Water (free)	\$1.50	Vietnamese Rolls (Hot/Cold)	
<b>FOOD SUPPLIED BY:</b>		Tofu (vegetarian), Roast BBQ Chicken or Roast Pork	
<i>Clearview Snack Bar and Litteries</i>		Your choice of Edam, Cucumber, Carrot, Cucumber and Chilli (optional), and soy sauce	
254 Hampstead Road, Clearview Telephone: 08 8262 1128		<b>SALADS, SNACKS AND DESSERTS</b>	
<b>INFORMATION:</b>		Filly and Fruit Tub	
Plain lunch bags can be purchased from the supermarket. Use one bag per child. Please wrap money and do not put more than \$10.00 in bag for each child.		Cheese, Chicken, Cucumber and Ham	
Emergency bags available at the office.		Fruit Salad Tub	

	QUANTITY	SIZE	PRICE	TOTAL
<b>SUMMER UNIFORM</b>				
<b>SHIRT – Short sleeves</b>				
SHIRTS – Grey		Sizes: 4,6,8,10,12,14,16,18	\$25	
SUMMER DRESS		Sizes: 4,6,8,10,12,14,16	\$20	
SUMMER DRESS Q (wider fitting) size 6		Sizes: 4,6,8,10,12,14,16	\$65	
SUMMER DRESS Q (wider fitting) sizes 10 & 14			\$65	
SUMMER DRESS Q (wider fitting) sizes 16 & 18			\$69	
<b>WINTER UNIFORM</b>				
<b>TROUSERS – Navy</b>				
TROUSERS – Grey (double knee)		Sizes: 4,6,8,10,12,14,16	\$29	
SHIRT – Long sleeves		Sizes: 4,6,8,10,12,14,16,18	\$20	
WINTER PINAFORE		Sizes: 4,6,8,10,12,14,16	\$70	
WINTER PINAFORE Q (wider)		Sizes: 6,10,14	\$70	
<b>UNISEX UNIFORM – ALL YEAR</b>				
<b>JACKET – Zip up</b>				
SOCKS – Embroidered Logo		Sizes: 4,6,8,10,12,14,16	\$50	
SPORTS POLO TDP		Sizes: 13-3, 12-6, 2-8	\$8	
SPORTS POLO TOP LONG		Sizes: 4,6,8,10,12,14,16	\$30	
SPORT SHORTS – Navy		Sizes: 4,6,8,10,12,14, 16, M	\$35	
SPORT TRACKPANTS – Navy		Sizes: 4,6,8,10,12,14,16	\$22	
BUCKET HAT – Reversible		Sizes: 5,6,8,10,12,14,16	\$36	
SCHOOL BACKPACK		Sizes: S, M, L	\$15	
BEANIE			\$45	
			\$10	
<b>TOTAL</b>				

UNIFORMS CAN BE PURCHASED IN PERSON - Mondays, Tuesdays and Wednesdays. On QKR app – everyday and by special arrangement with office staff.

**UNIFORM – SUMMER**

**TERMS 1 AND 4**

Blue regulation check dress with collar and short sleeves.  
Medium blue short or long sleeved shirt with logo  
Grey shorts  
Navy blue zip jacket with logo  
White socks with dress  
Grey socks with shorts  
Black lace up shoes – flat heels  
Blue ribbons or scrunchies  
Hair clips – blue/neutral brown

**UNIFORM – WINTER**

**TERMS 2 AND 3**

Blue regulation check pinafore/skirt  
Navy blue zip jacket with logo  
Navy blue trousers  
Grey shorts or long grey/maelange trousers  
Medium blue long sleeved shirt with logo  
Navy socks or tights with pinafore  
Grey socks with shorts/trousers  
Black lace up shoes – flat heels  
Blue ribbons or scrunchies  
Hair clips – blue/neutral brown

**HATS**

Hats are reversible in Navy/House colours  
Navy Beanie with logo

**SPORT UNIFORM**

Navy blue sports shorts with logo  
Navy/red polo shirt with logo  
Navy/red long sleeved polo shirt with logo  
Navy blue zip jacket with logo  
Navy blue track pants with logo  
White socks or striped sock from Uniform Shop  
Preferentially white sneakers

**SCHOOL BAGS (optional)**

School back packs with logo are available.  
All uniform is available at School (Black shoes, navy socks and tights to be purchased outside school.)

## EARTH CARE SQUAD

The 2024 Semester 1 Earth Care Squad will be soon elected and will receive their badges shortly after. The school garden needs a big clean up and each class will have their own garden bed to grow fruit and vegetables to share and take home.

We are going to have more chickens after the sad news from last year.

There is still some work to do to prepare the chicken coop with a larger cage but we will see this progress soon and are looking forward to welcoming these new additions to the Earth Care Squad duties.

### LITTER AWARENESS

Please help care for our school environment and encourage your child to bring their rubbish home or pack lunches with little wrapping.

Thank you for your support in this important matter.

## COMMUNITY GROUP NEWS

## ADVERTISEMENTS

### Helpful Contacts/Links for families

### QKR App – issue with new Android phones



There is an issue with being able to download the QKR App to new android phones.

The QKR technicians are working diligently towards a solution but don't have a release date as yet. We will advise once resolved.

In the interim, any parents having android issues can make purchases via the QKR website below:

Qkr! by MasterCard ([qkrschool.com](http://qkrschool.com))

Thank you for your patience.

---

All Content Copyright 2024 ©